

HEATHS TO SEA

LANDSCAPE RECOVERY OF THE LOWER OTTER VALLEY



CLINTON DEVON ESTATES

Project Background

VISION

A diverse landscape, rich in nature and ecologically healthy whilst also supporting food production, net zero, timber and access needs.

AIM

To power nature recovery across agricultural hinterlands linking 3 parts of the Pebblebed Heaths NNR by building connectivity through 4,144ha of the lower Otter catchment through floodplain restoration and riparian and multi-purpose woodland creation.

LANDSCAPE RECOVERY

One of DEFRA's three environmental land management schemes (ELMs), alongside the Sustainable Farming Incentive (SFI) and Countryside Stewardship (CS).

ELMs support farmers and land managers to deliver similar things – clean and plentiful water, thriving plants and wildlife, climate change adaptation and mitigation, and healthy soils – but each will do so in different ways.

The SFI and CS offer shorter agreements based on a menu of standards and options. Farmers can select those best suited to their holding and farming practices.

Landscape Recovery offers farmers and land managers the opportunity to co-design a long term, bespoke, agreement to produce environmental and climate goods across landscape scale projects.



HEATHS TO SEA

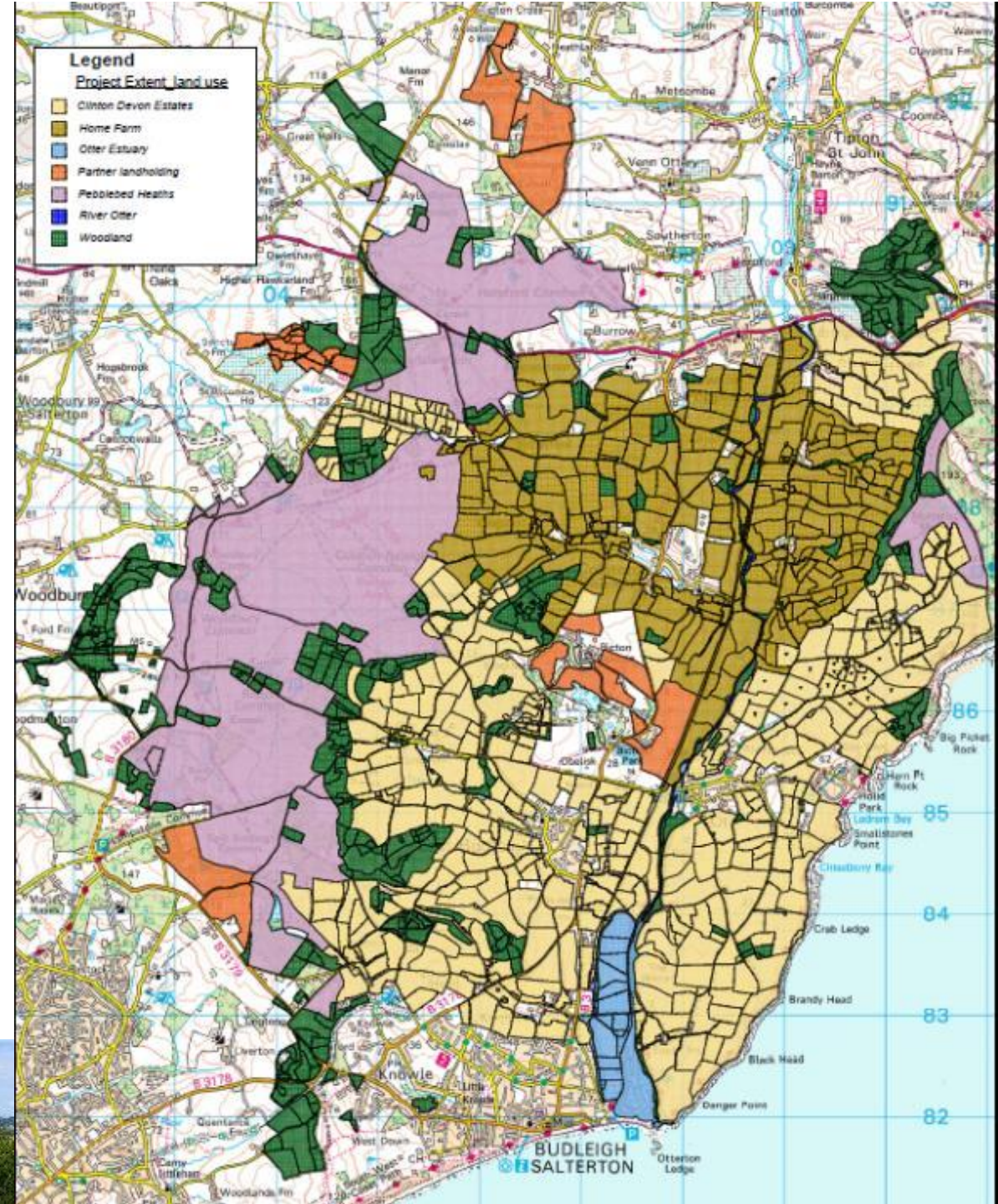
LANDSCAPE RECOVERY OF THE LOWER OTTER VALLEY

Landscape change planning

Whole project area – current land use	Approx area (ha)
Home Farm	911
Tenant Farms	1632
Pebblebed Heaths (inc NNR)	1117
Otter Estuary (NNR)	90
East Devon Woodland	694*
Partner landholdings	224

Estate land in project area – land use	Approx area (ha)
Agriculture	2543
Conservation	1207
Woodland	694*

*some overlap with Home Farm



Landscape change planning

Ambition:

Proposed change	Approx area
Commercial woodland creation	100
Wood pasture / sp. rich grass / scrub (cattle grazed)	185
Meadow / species rich grassland	30
Wetland – floodplain (grazed with cattle)	200
Riparian and field buffers (incl wet woodland)	40
Total	555



HEATHS TO SEA

LANDSCAPE RECOVERY OF THE LOWER OTTER VALLEY



Transitioning of 185 ha of low productivity pasture into a dynamic mosaic of wildlife-rich wood pasture, scrub and species rich grasslands on Otterton Hill



HEATHS TO SEA

LANDSCAPE RECOVERY OF THE LOWER OTTER VALLEY



The restoration and creation of 155 ha of coastal and floodplain grazing marsh adjacent to the Otter Estuary to build upon East Devon's exceptional wetland wildlife offer



HEATHS TO SEA

LANDSCAPE RECOVERY OF THE LOWER OTTER VALLEY



Riparian margins and corridors to buffer streams from agricultural activities and provide corridors and space for wildlife



HEATHS TO SEA

LANDSCAPE RECOVERY OF THE LOWER OTTER VALLEY

Landscape change planning

Approach: Pebblebed Heaths

- Increasing grazing extent across the Pebblebed Heaths through capital funding for fencing and infrastructure.
- Secured funding for Ranger and management team for 20+ years
- Increased engagement offer to support conservation outcomes and manage footfall



Landscape change planning

Approach: Wider farmed area

- Work with all tenants to identify a range of interventions that join up across the wider landscape to support:
 - Nature enhancement – flower rich margins and meadows, wild bird plots, creation or management of orchards
 - Water management to reduce run off and erosion
 - Soil management to increase soil carbon and reduce inputs
 - Creation of ponds and water bodies
- Produce a bespoke farm plan for each tenant



Stakeholder engagement

- Tenants and project partners
- Technical Advisory Group
- Stakeholder Communication Advisory Group
- Stakeholder workshop to feed-in public thoughts
 - 34 different community groups, activities, educational institutions, charities and businesses across the project area
- Public engagement:
 - 6-week programme of 9 drop-in sessions, 2 guided walks, and online survey. 185 people took part.
 - Public Forum and exhibition to present draft proposals
 - Presence at local community or partner events e.g. Budleigh Salterton Gala, Heath Week Festival day
 - Farmwise schools day
 - Volunteering - Riverfly and Redd surveying
 - Plans available online
- 98% supportive of Heaths to Sea project aims
- General public values access/walking routes, the views, Estuary and Pebblebed Heaths managed for nature
- General public main concerns include new housing developments in East Devon, sewage management, water quality, flood risk, risk to public access routes, unsustainable land management

Rank	Options
1	Greater wildlife diversity and connection/connectivity
2	Improved water quality
3	Maintaining food productivity while enhancing nature
4	Re-naturalising the river and flood management
5	Managing public access
6	Tree planting and cover
7	Improving the health of soil
8	Participation, engagement and education
9	Project funding and financial sustainability
10	Clear plan explaining the progress of landscape recovery

